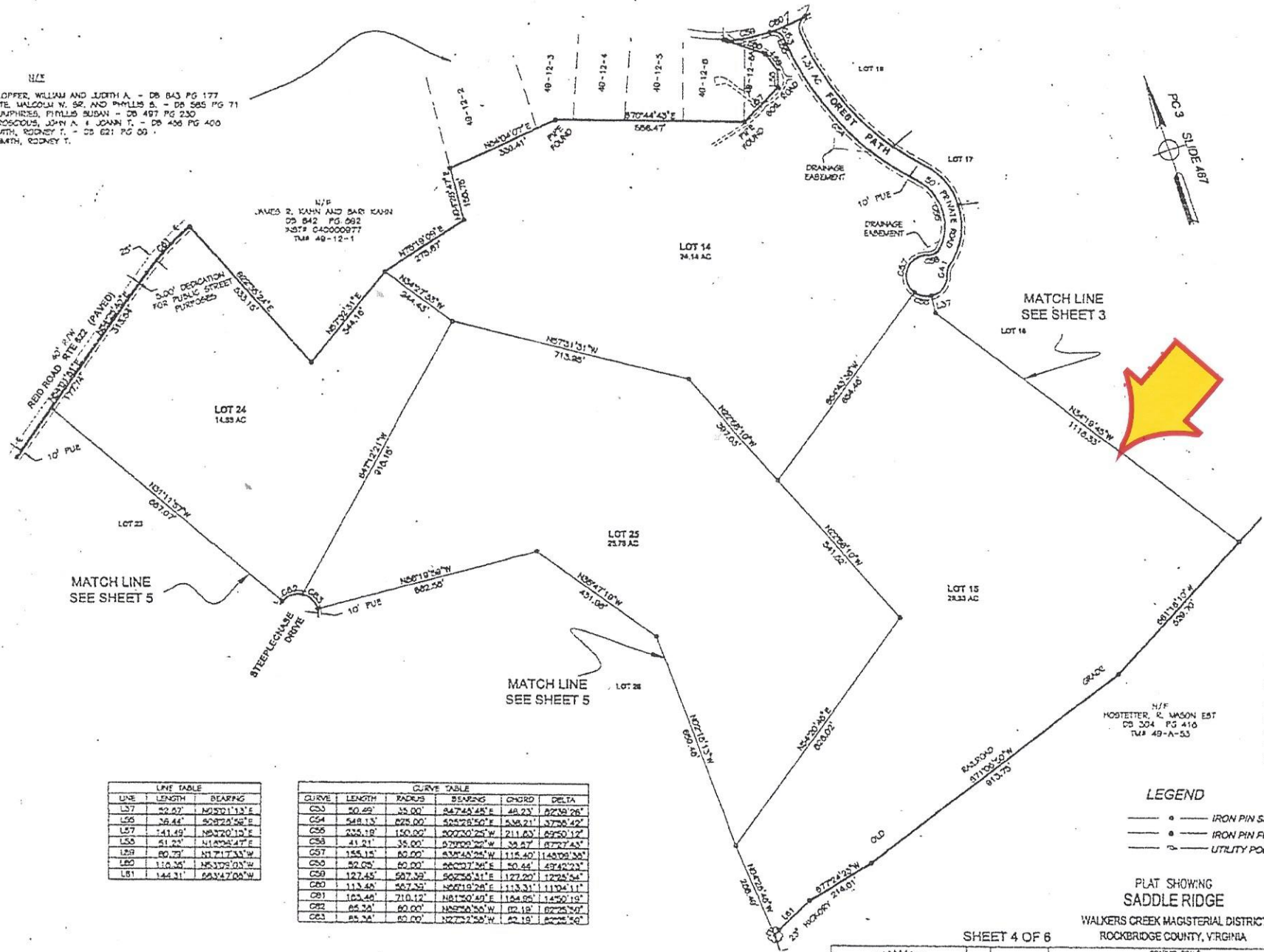


N/E
 4R-12-2 KLOPPER, WILLIAM AND JUDITH A. - DB 843 PG 177
 4R-12-3 HITE, MALCOLM W. SR. AND PHILLIS B. - DB 565 PG 71
 4R-12-4 HUMPHRES, PHILLIS SUSAN - DB 497 PG 230
 4R-12-5 PROSCIOS, JOHN A. & JOANN T. - DB 436 PG 400
 4R-12-6 SMITH, RODNEY T. - DB 621 PG 80
 4R-12-8A SMITH, RODNEY T.

N/E
 JAMES R. KAHN AND SARI KAHN
 DB 842 PG 892
 JUST# C40000977
 TMA 49-12-1



MATCH LINE
SEE SHEET 5

MATCH LINE
SEE SHEET 5

MATCH LINE
SEE SHEET 3

LINE	LENGTH	BEARING
L37	22.07'	S63°21'13"E
L38	28.44'	S0°22'58"E
L37	241.49'	N8°22'01"W
L39	41.23'	N11°02'47"E
L39	80.73'	N17°13'33"W
L40	110.34'	N53°29'03"W
L41	144.31'	S83°47'05"W

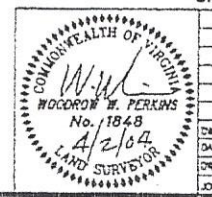
CURVE	LENGTH	RADIUS	BEARING	CHORD	DELTA
C33	20.69'	38.00'	S47°24'24"E	48.23'	87°59'26"
C34	548.13'	678.00'	S83°28'50"E	536.21'	87°56'42"
C35	895.19'	150.00'	S07°20'25"W	211.63'	89°50'12"
C36	41.21'	38.00'	S70°00'20"W	38.87'	87°27'45"
C37	154.15'	80.00'	S30°54'04"W	114.40'	148°09'38"
C38	82.00'	80.00'	S60°17'34"E	80.44'	87°40'23"
C39	127.45'	587.39'	S02°56'41"E	127.20'	127°54'54"
C40	113.48'	567.39'	N00°19'24"E	113.31'	113°04'11"
C41	163.48'	710.12'	N41°30'49"E	164.05'	14°50'19"
C42	64.38'	80.00'	N48°50'00"W	62.18'	82°25'50"
C43	84.24'	80.00'	N27°22'58"W	82.19'	82°25'50"

LEGEND

- IRON PIN SET
- IRON PIN FOUND
- UTILITY POLE

PLAT SHOWING
 SADDLE RIDGE
 WALKERS CREEK MAGISTERIAL DISTRICT
 ROCKBRIDGE COUNTY, VIRGINIA

SHEET 4 OF 6



TITLE	JUD
DATE	04/02/04
DWG.	F-REC-189-SP-20
JOB	03199

GRAPHIC SCALE

PERKINS & HARRISON
 ENGINEERS & PLANNERS & SURVEYORS

PO BOX 1567 17 W. NELSON STREET LEONINGTON, VIRGINIA 24450
 PHONE: 540-454-5001 FAX: 540-454-5009
 E-Mail: pro@perkins-harrison.com

Virginia for the Circuit Court of Rockbridge County, April 19, 2004
 This plat showing property of Saddle Ridge was presented to this office and admitted to recordation.

Attest:
R. Blue
 CLERK