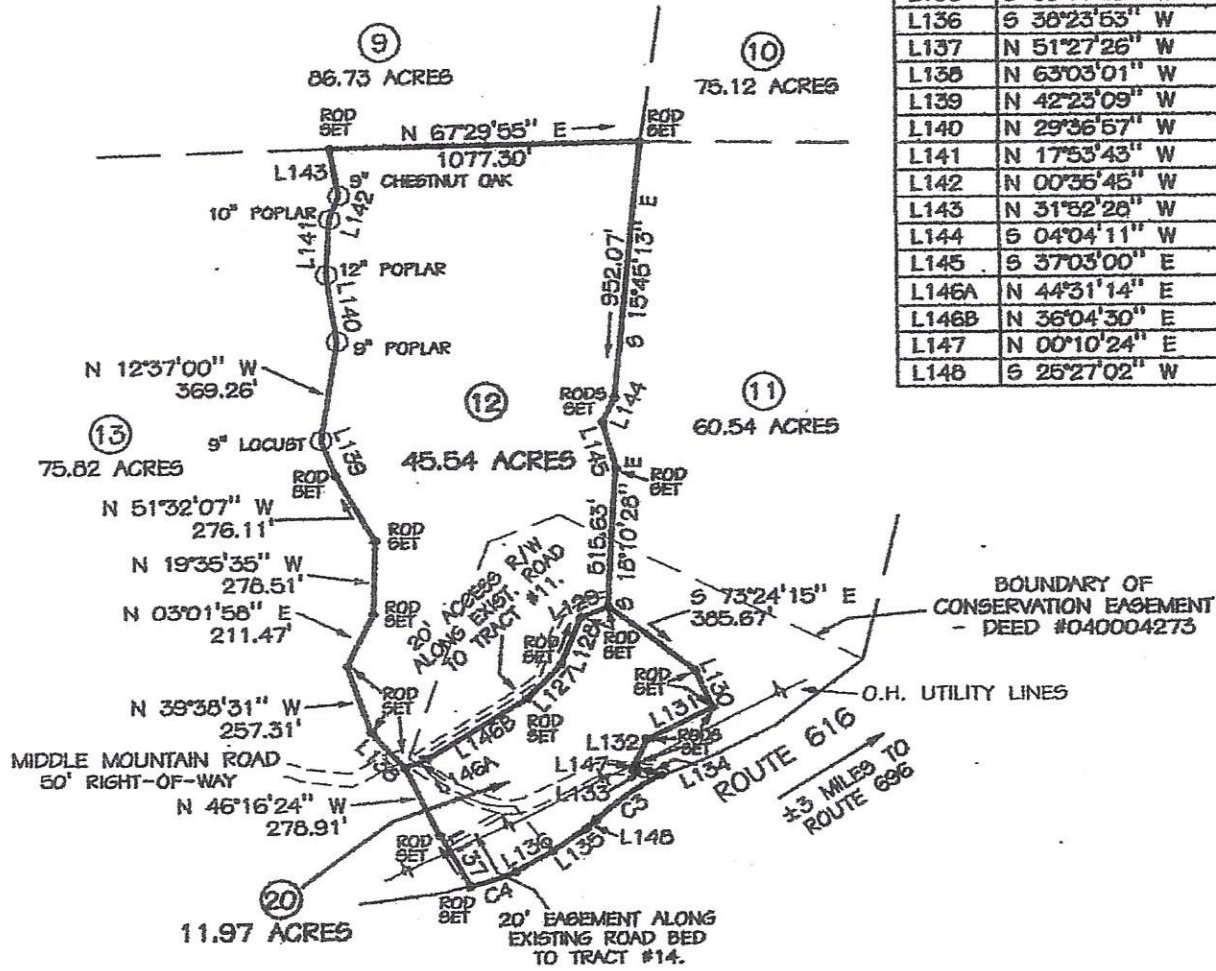


**NOTES**

1) SEE SHEET 1 FOR NOTES.

CURVE	BEARING	RADIUS	LENGTH	CHORD
C3	S 32°04'23" W	1022.25	206.20	205.26
C4	S 49°53'51" W	934.90	164.44	164.23

LINE	BEARING	DISTANCE
L127	N 22°04'37" E	172.83'
L128	N 00°24'51" W	185.37'
L129	N 45°04'10" E	103.88'
L130	S 45°04'33" E	150.77'
L131	S 42°14'34" W	259.48'
L132	S 00°10'24" W	101.76'
L133	N 75°47'29" E	55.00'
L134	N 86°52'17" E	45.00'
L135	S 33°17'50" W	146.40'
L136	S 38°23'53" W	146.40'
L137	N 51°27'26" W	215.92'
L138	N 63°03'01" W	176.49'
L139	N 42°23'09" W	141.13'
L140	N 29°36'57" W	248.25'
L141	N 17°53'43" W	207.51'
L142	N 00°35'45" W	95.59'
L143	N 31°52'28" W	175.49'
L144	S 04°04'11" W	98.74'
L145	S 37°03'00" E	177.27'
L146A	N 44°31'14" E	82.93'
L146B	N 36°04'30" E	413.24'
L147	N 00°10'24" E	19.00'
L148	S 25°27'02" W	45.62'



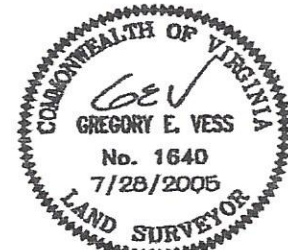
**SURVEY FOR HORSE MOUNTAIN PROPERTIES**

JACKSON RIVER MAGISTERIAL DISTRICT  
 ALLEGHANY COUNTY, VIRGINIA  
 SURVEYED 28 JULY 2005  
 REVISED 17 OCTOBER 2005  
 REVISED 20 OCTOBER 2005

SCALE 1" = 500'



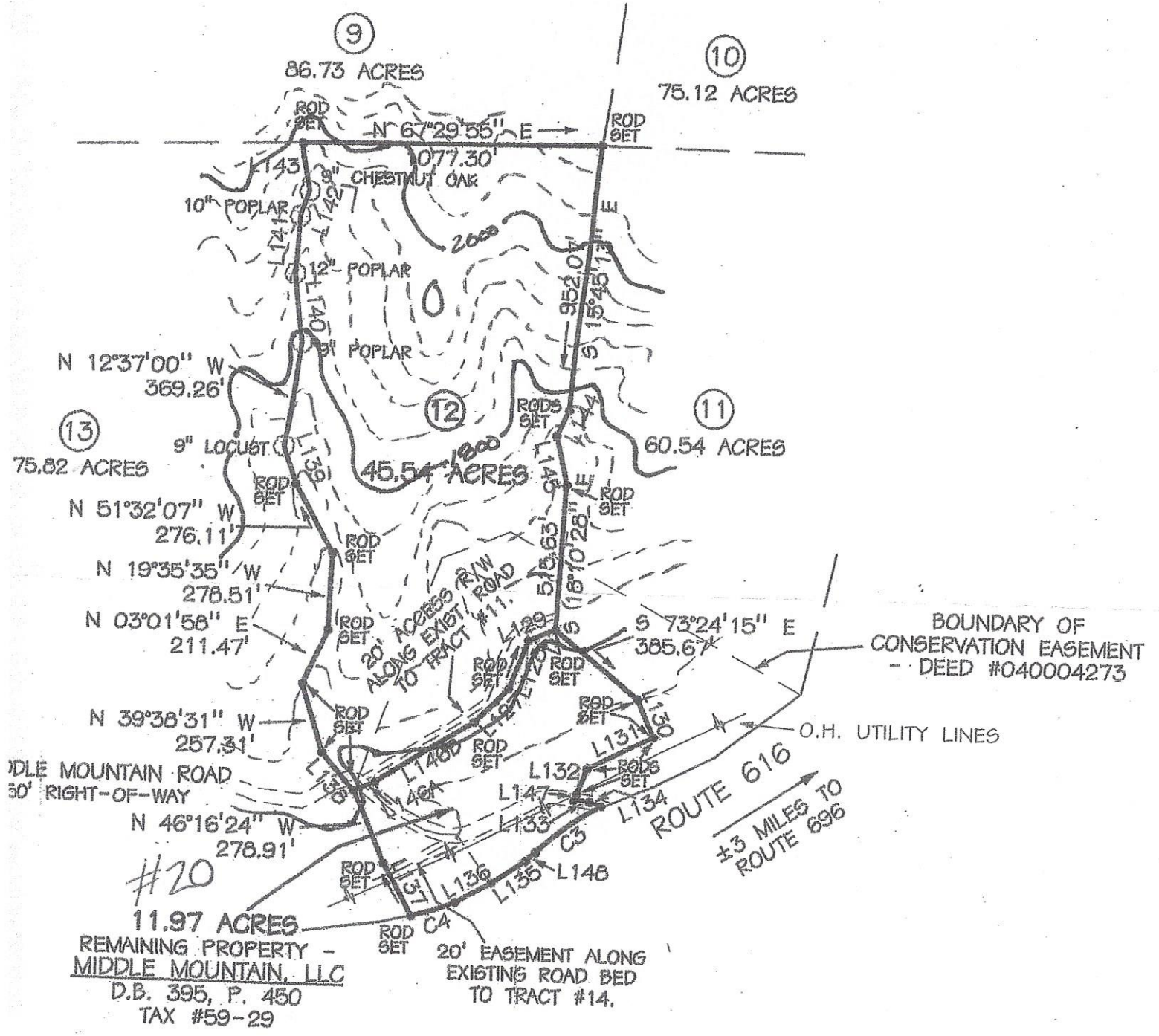
SHEET 7 OF 13



**Vess Surveying, Inc.**

132 North Maple Avenue - P.O. Box 1112  
 Covington, VA 24426  
 phone (540) 962-3900 - fax (540) 962-3870

3014-2	2	3	DJV
JOB NO.	SIZE	REV.	DWN.BY



9  
86.73 ACRES

10  
75.12 ACRES

13  
75.82 ACRES

12  
45.54 ACRES

11  
60.54 ACRES

#20  
11.97 ACRES  
REMAINING PROPERTY -  
MIDDLE MOUNTAIN, LLC  
D.B. 395, P. 450  
TAX #59-29

BOUNDARY OF  
CONSERVATION EASEMENT  
- DEED #040004273

O.H. UTILITY LINES

ROUTE 616  
±3 MILES TO  
ROUTE 696

20' EASEMENT ALONG  
EXISTING ROAD BED  
TO TRACT #14.

20' ACROSS R/W  
ALONG EXISTING ROAD  
TO TRACT #11.

MIDDLE MOUNTAIN ROAD  
50' RIGHT-OF-WAY

N 12°37'00" W  
369.26'

N 51°32'07" W  
276.11'

N 19°35'35" W  
278.51'

N 03°01'58" E  
211.47'

N 39°38'31" W  
257.31'

N 46°16'24" W  
278.91'

N 67°29'55" E

S 73°24'15" E  
385.67'

L143  
10" POPLAR

L140  
12" POPLAR

L140  
9" POPLAR

L140  
9" LOCUST

L140  
9" LOCUST

L140  
9" LOCUST

L140  
9" LOCUST

L140  
9" LOCUST

L140  
9" LOCUST

L140  
9" LOCUST

L140  
9" LOCUST

L140  
9" LOCUST

L140  
9" LOCUST

L140  
9" LOCUST

L140  
9" LOCUST

L140  
9" LOCUST

L140  
9" LOCUST

L140  
9" LOCUST

L140  
9" LOCUST

L140  
9" LOCUST

L140  
9" LOCUST

L140  
9" LOCUST