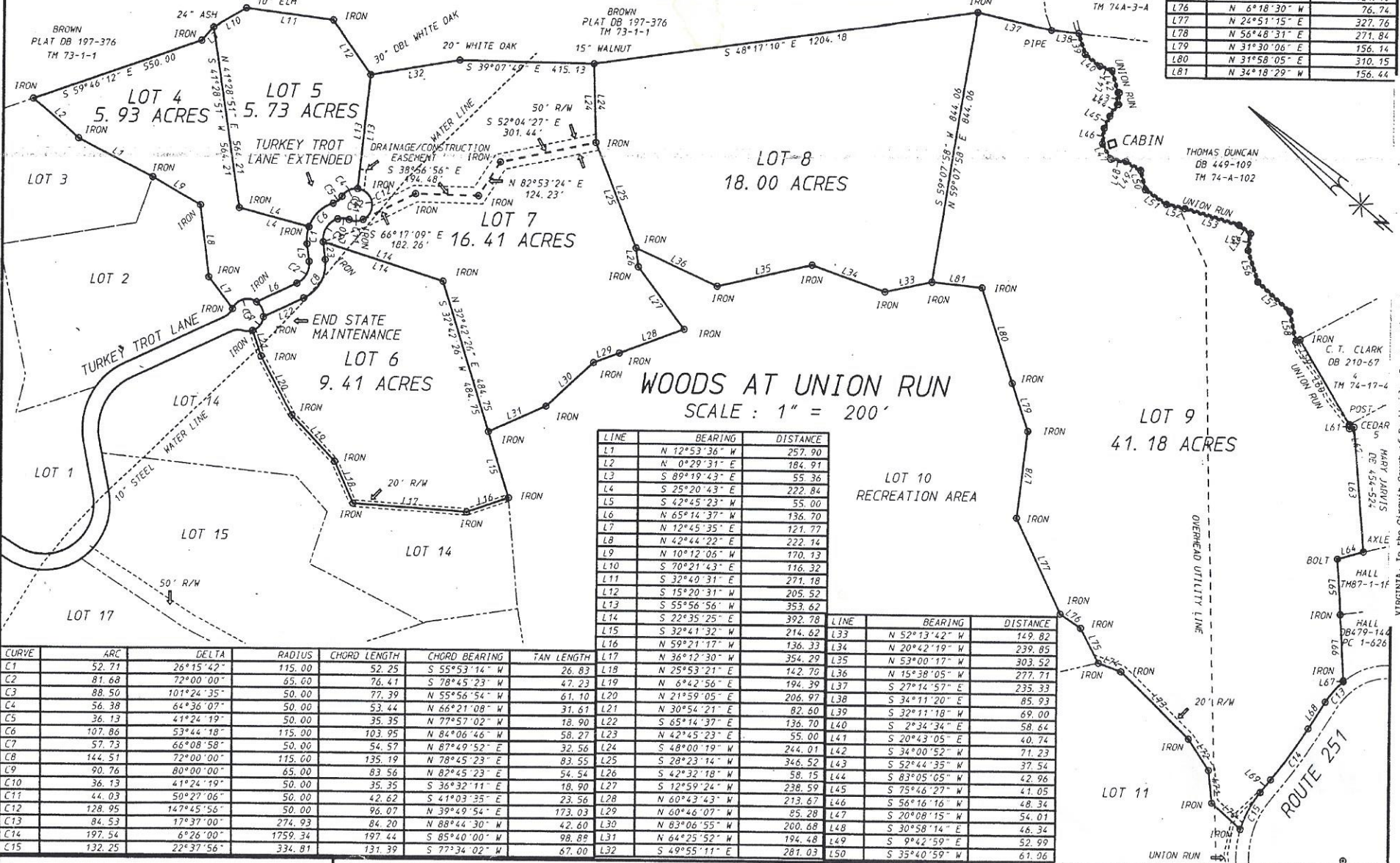


2/1009

LINE	BEARING	DISTANCE	LINE	BEARING	DISTANCE	LINE	BEARING	DISTANCE	LINE	BEARING	DISTANCE
L51	S 6°19'23" E	79.53	L56	S 31°47'32" W	101.18	L61	S 47°11'27" W	13.11	L66	S 46°30'24" W	203.20
L52	S 27°58'08" E	58.14	L57	S 2°07'41" W	134.27	L62	S 57°30'00" E	15.18	L67	S 46°30'24" W	3.73
L53	S 23°55'57" E	177.51	L58	S 38°08'14" W	95.67	L63	S 45°09'15" W	388.12	L68	S 82°27'00" W	98.30
L54	S 4°34'24" E	43.86	L59	S 67°42'45" E	15.09	L64	N 56°13'40" W	83.32	L69	S 88°53'00" W	51.04
L55	S 57°51'59" W	52.22	L60	S 18°53'29" W	303.88	L65	S 45°30'24" W	172.51	L70	N 1°23'11" E	122.55

LINE	BEARING	DISTANCE
L71	N 44°01'34" E	103.16
L72	N 15°54'40" E	115.34
L73	N 4°05'34" E	295.43
L74	N 19°56'39" W	74.03
L75	N 21°57'05" E	121.10
L76	N 6°18'30" W	76.74
L77	N 24°51'15" E	327.76
L78	N 56°48'31" E	271.84
L79	N 31°30'06" E	156.14
L80	N 31°58'05" E	310.15
L81	N 34°18'29" W	156.44



LINE	BEARING	DISTANCE
L1	N 12°53'36" W	257.90
L2	N 0°29'31" E	184.91
L3	S 89°19'43" E	55.36
L4	S 25°20'43" E	222.84
L5	S 42°45'23" W	55.00
L6	N 65°14'37" W	136.70
L7	N 12°45'35" E	121.77
L8	N 42°44'22" E	222.14
L9	N 10°12'05" W	170.13
L10	S 70°21'43" E	116.32
L11	S 32°40'31" E	271.18
L12	S 15°20'31" W	205.52
L13	S 55°56'56" W	353.62
L14	S 22°35'25" E	392.78
L15	S 32°41'32" W	214.62
L16	N 59°21'17" W	136.33
L17	N 36°12'30" W	354.29
L18	N 25°53'21" E	142.70
L19	N 6°42'56" E	194.39
L20	N 21°59'05" E	206.97
L21	N 30°54'21" E	82.60
L22	S 65°14'37" E	136.70
L23	N 42°45'23" E	55.00
L24	S 48°00'19" W	244.01
L25	S 28°23'14" W	346.52
L26	S 42°32'18" W	58.15
L27	S 12°59'24" W	238.59
L28	N 60°43'43" W	213.67
L29	N 60°46'07" W	85.28
L30	N 83°06'55" W	200.68
L31	N 64°25'52" W	194.48
L32	S 49°55'11" E	281.03
L33	N 52°13'42" W	149.82
L34	N 20°42'19" W	239.85
L35	N 53°00'17" W	303.52
L36	N 15°38'05" W	277.71
L37	S 27°14'57" E	235.33
L38	S 34°11'20" E	85.93
L39	S 32°11'18" W	69.00
L40	S 2°34'34" E	58.64
L41	S 20°43'05" E	40.74
L42	S 34°00'52" W	71.23
L43	S 52°44'35" W	37.54
L44	S 83°05'05" W	42.96
L45	S 75°46'27" W	41.05
L46	S 56°16'16" W	48.34
L47	S 20°08'15" W	54.01
L48	S 30°58'14" E	46.34
L49	S 9°42'59" E	52.99
L50	S 35°40'59" W	61.96

CURVE	ARC	DELTA	RADIUS	CHORD LENGTH	CHORD BEARING	TAN LENGTH
C1	52.71	26°15'42"	115.00	52.25	S 55°53'14" W	26.83
C2	81.68	72°00'00"	65.00	76.41	S 78°45'23" W	47.23
C3	88.50	101°24'35"	50.00	77.39	N 55°56'54" W	61.10
C4	56.38	64°36'07"	50.00	53.44	N 66°21'08" W	31.61
C5	36.13	41°24'19"	50.00	35.35	N 77°57'02" W	18.90
C6	107.86	53°44'18"	115.00	103.95	N 84°06'46" W	58.27
C7	57.73	66°08'58"	50.00	54.57	N 87°49'52" E	32.56
C8	144.51	72°00'00"	115.00	135.19	N 78°45'23" E	83.55
C9	90.76	80°00'00"	65.00	83.56	N 82°45'23" E	54.54
C10	36.13	41°24'19"	50.00	35.35	S 36°32'11" E	18.90
C11	44.03	50°27'06"	50.00	42.62	S 41°03'35" E	23.56
C12	128.95	147°45'56"	50.00	96.07	N 39°49'54" E	173.03
C13	84.53	173°07'00"	274.93	84.20	N 88°44'30" W	42.60
C14	197.54	6°26'00"	1759.34	197.44	S 85°40'00" W	98.88
C15	132.25	22°37'56"	334.81	131.39	S 77°34'02" W	67.00

DORSEY SURVEYING P. L. C.
 POST OFFICE BOX 1098
 LEXINGTON, VA. 24450
 540-463-4893

DORSEY SURVEYING P. L. C.

F. B.	99	No.	Date	By	Revision	FILE NO.
NAME	JAKESUB					1619
DISK						SHEET OF
						3

VIRGINIA. In the Circuit Court of Rockbridge County, Virginia, February 11, 1998
 This plat showing Woods at Union Run Subdivision was this day presented to this office and
 admitted to recordation.

[Signature]

Attest: