

JOHN WALTON CEMETERY

DB. 50 PG. 364
TAX #107-5A

MY COMMISSION EXPIRES: 2/28/10
Reg. No. - 227602

APPROVED

Shawn A. R. D.
SUBDIVISION AGENT
Dre-time division
11-18-08

JERRY L. MAY
DB. 113 PG. 530
TAX #107-8

BARBRA KEYSER
FORMERLY QUIGLEY ARNOLD KEYSER
D.B. 77, PG. 40
TAX #107-7

PARCEL A
6.963 ACRES

PARCEL B
6.000 ACRES

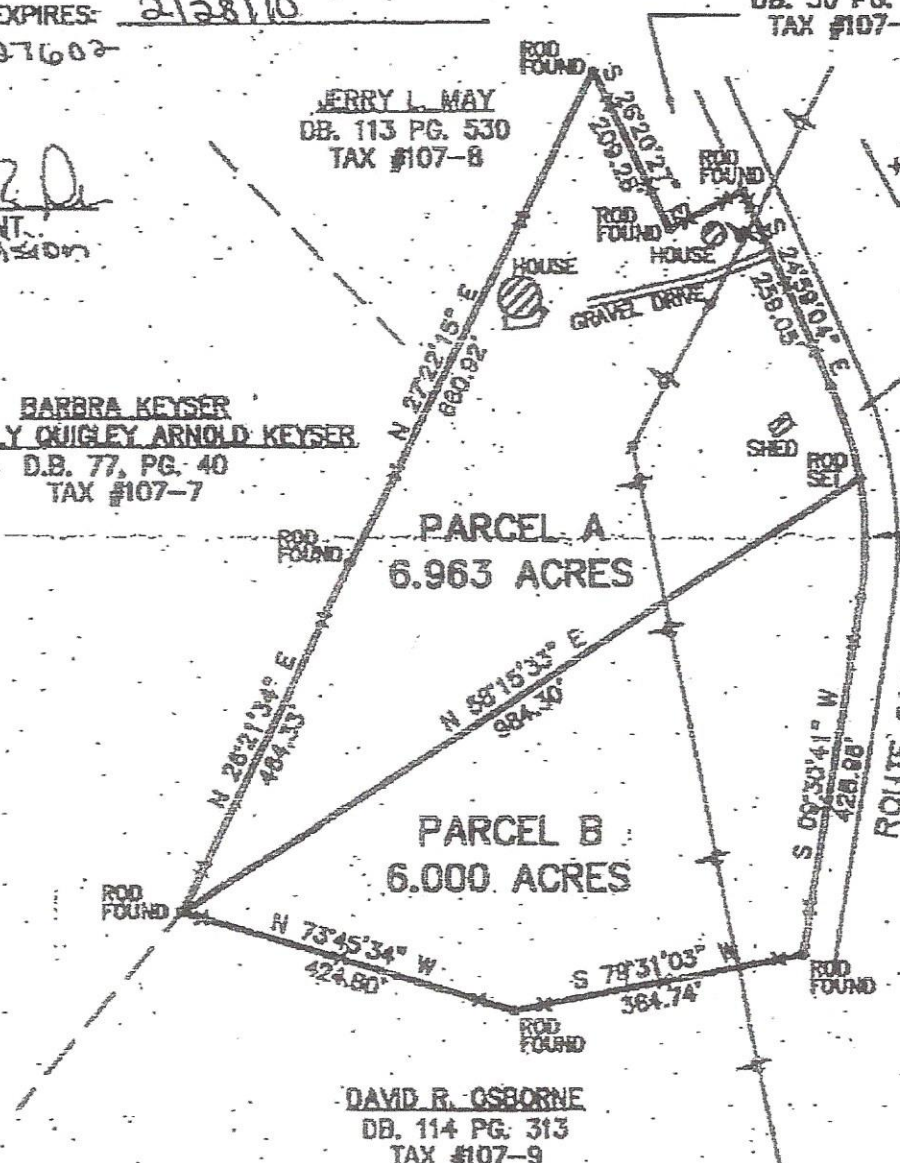
DAVID R. OSBORNE
DB. 114 PG. 313
TAX #107-9

+/- 0.7 MILE TO
ROUTE 220

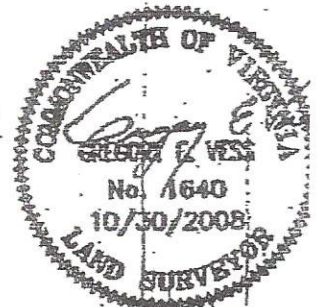
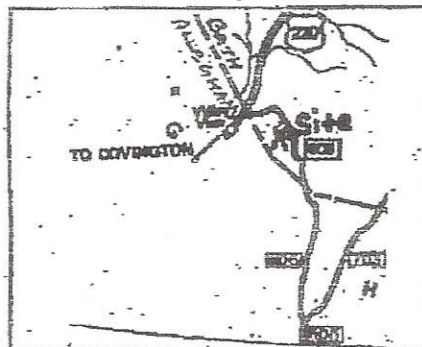
L=112.55'
R=430.46'
BRG=S 1727'13" E
C LEN=112.23'

L=147.92'
R=430.48'
BRG=S 0007'07" E
C LEN=147.20'

ROUTE 608
40' R/W
D.B. 110, PG. 208



DIVISION SURVEY FOR
DONALD J. HARRISON
VALLEY SPRINGS MAGISTERIAL DISTRICT
BATH COUNTY, VIRGINIA
SURVEYED 30 OCTOBER 2008
SCALE 1" = 200'



Vess Surveying

132 North Maple Avenue - P.O. Box
Covington, VA 24026
phone (540) 562-3900 - fax (540) 562-3901

4348-1	2	1	
JOB NO.	SIZE	REV.	

SEE INSTRUMENT # 08-1073