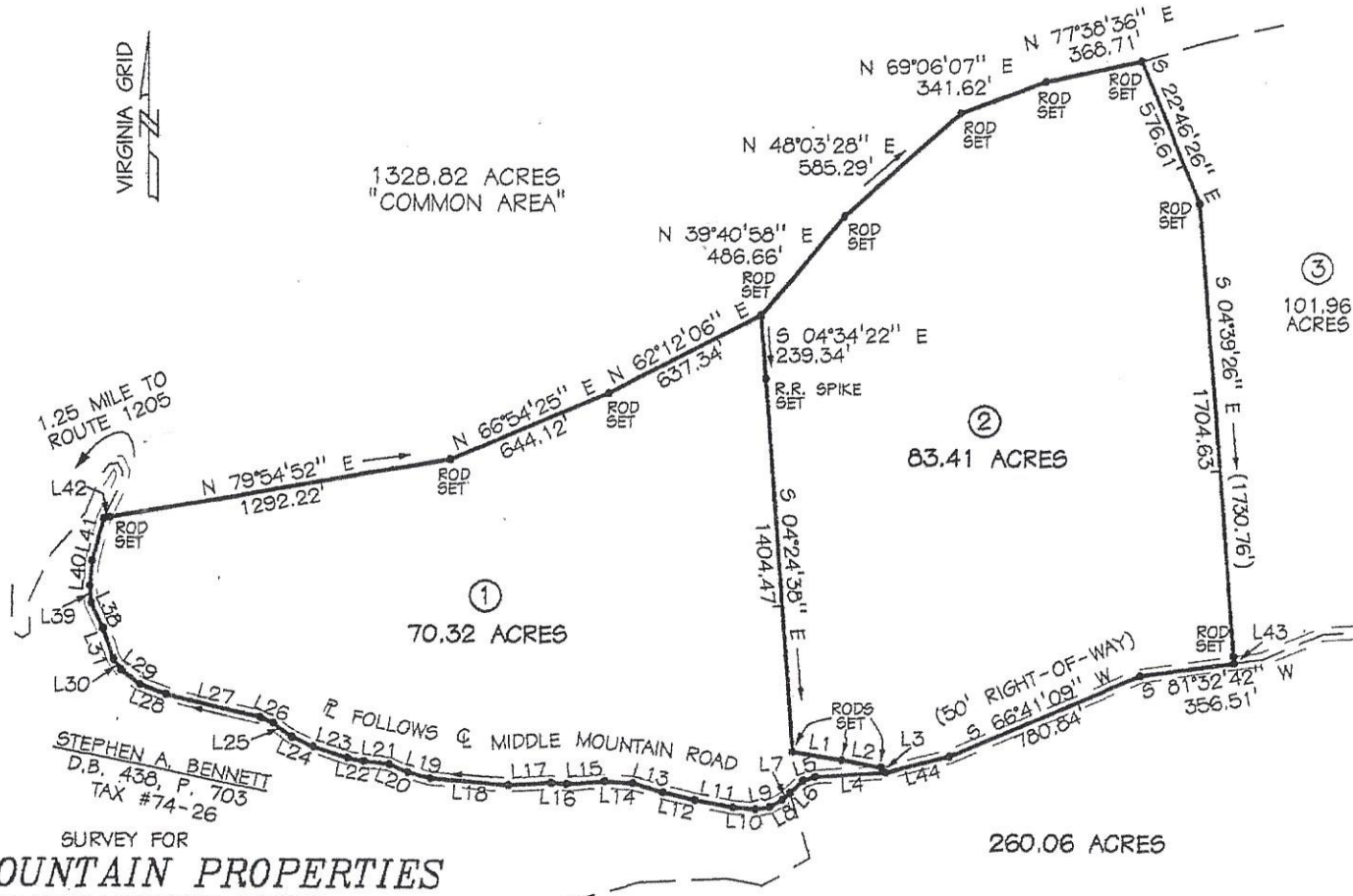


NOTES

1) SEE SHEET 1 FOR NOTES.

LINE	BEARING	DISTANCE
L1	S 81°07'43" E	188.83'
L2	S 79°33'53" E	150.24'
L3	S 42°47'48" E	27.17'
L4	S 86°09'48" W	266.79'
L5	S 71°23'39" W	49.28'
L6	S 46°32'15" W	67.39'
L7	S 46°32'12" W	37.45'

LINE	BEARING	DISTANCE
L8	S 59°32'03" W	54.89'
L9	S 79°33'11" W	51.88'
L10	N 86°05'11" W	84.43'
L11	N 79°56'56" W	145.17'
L12	N 76°56'30" W	121.86'
L13	N 73°31'46" W	117.66'
L14	N 85°54'32" W	104.23'
L15	S 85°20'11" W	145.14'
L16	N 86°00'52" W	57.32'
L17	S 86°47'40" W	161.63'
L18	N 85°34'36" W	293.75'
L19	N 74°44'40" W	88.10'
L20	N 66°42'04" W	76.05'
L21	N 84°22'11" W	95.83'
L22	N 78°14'21" W	65.81'
L23	N 71°51'04" W	133.14'
L24	N 66°09'04" W	87.94'
L25	N 52°38'17" W	87.21'
L26	N 65°22'41" W	52.73'
L27	N 76°29'46" W	362.00'
L28	N 69°37'03" W	103.72'
L29	N 52°42'34" W	88.85'
L30	N 35°08'25" W	50.07'
L31	N 18°38'50" W	122.38'
L38	N 24°09'32" W	104.86'
L39	N 04°47'04" W	63.90'
L40	N 04°54'19" E	95.03'
L41	N 14°43'35" E	164.67'
L42	N 79°54'52" E	23.00'
L43	S 04°39'26" E	26.13'
L44	S 75°09'23" W	247.82'



VIRGINIA GRID

1328.82 ACRES
"COMMON AREA"

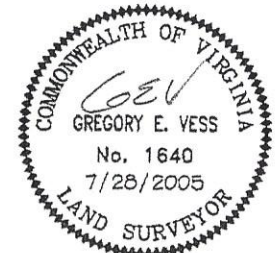
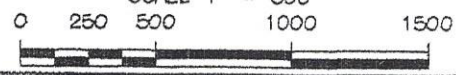
1.25 MILE TO
ROUTE 1205

STEPHEN A. BENNETT
D.B. 438, P. 703
TAX #74-26

SURVEY FOR

HORSE MOUNTAIN PROPERTIES

JACKSON RIVER MAGISTERIAL DISTRICT
ALLEGHANY COUNTY, VIRGINIA
SURVEYED 28 JULY 2005
REVISED 17 OCTOBER 2005
REVISED 20 OCTOBER 2005
SCALE 1" = 500'



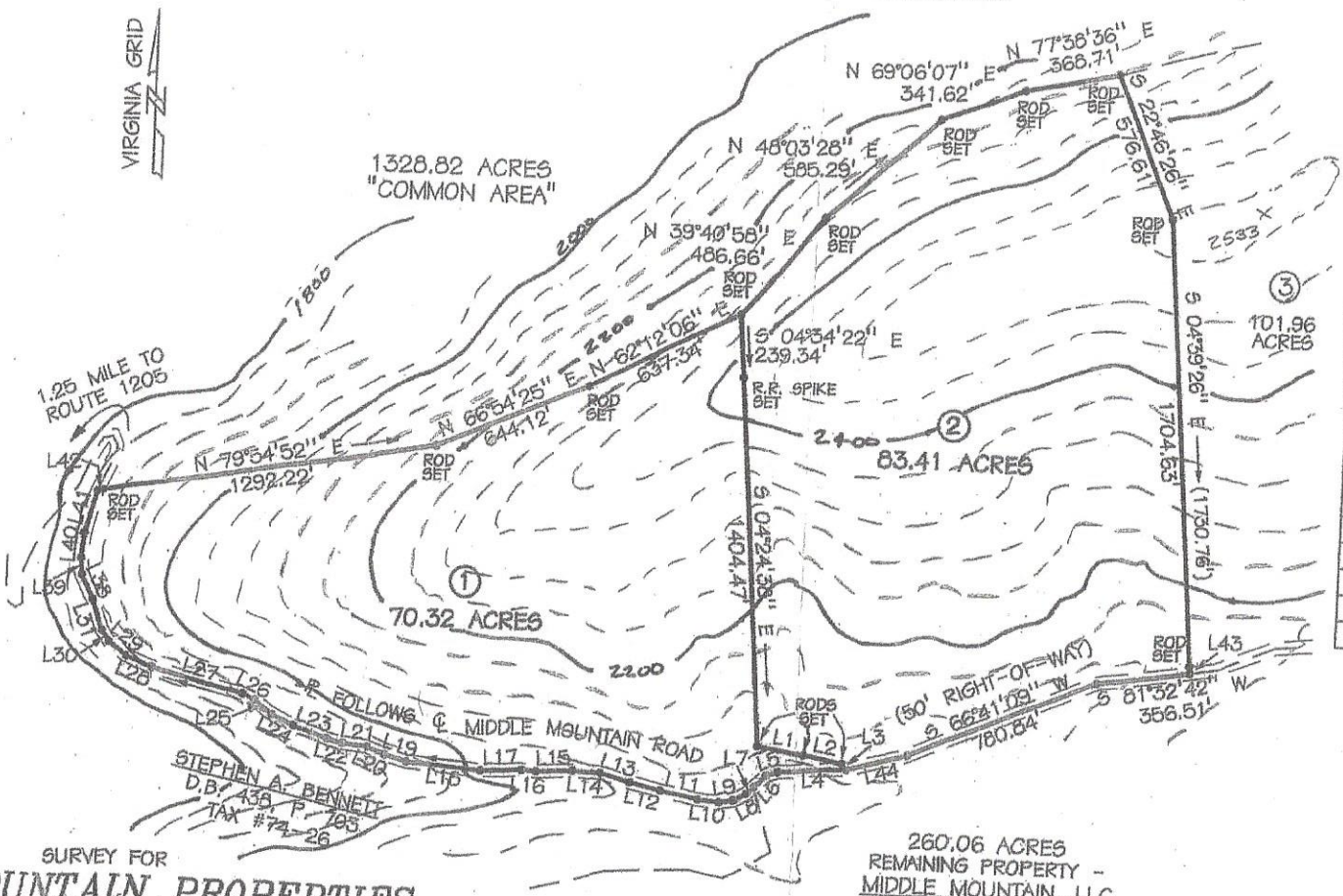
Vess Surveying, Inc.

132 North Maple Avenue - P.O. Box 1112
Covington, VA 24426
phone (540) 962-3900 - fax (540) 962-3870

3514-2	2	3	DJW
JOB NO.	SIZE	REV.	DWN.BY

L3	S 42°47'48" E	27.17'
L4	S 86°09'48" W	266.79'
L5	S 71°23'39" W	49.28'
L6	S 46°32'15" W	67.39'
L7	S 46°32'12" W	37.45'

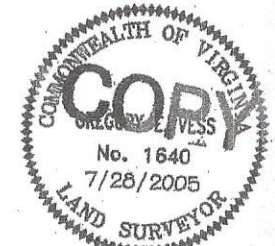
L8	S 79°33'11" W
L10	N 86°05'11" W
L11	N 79°56'56" W
L12	N 76°56'30" W
L13	N 73°31'46" W
L14	N 85°54'32" W
L15	S 85°20'11" W
L16	N 86°00'52" W
L17	S 86°47'40" W
L18	N 85°34'36" W
L19	N 74°44'40" W
L20	N 66°42'04" W
L21	N 84°22'11" W
L22	N 78°14'21" W
L23	N 71°51'04" W
L24	N 66°09'04" W
L25	N 52°35'17" W
L26	N 65°22'41" W
L27	N 76°29'46" W
L28	N 69°37'03" W
L29	N 52°42'34" W
L30	N 35°08'25" W
L31	N 18°38'50" W
L38	N 24°09'32" W
L39	N 04°47'04" W
L40	N 04°54'19" E
L41	N 14°43'35" E
L42	N 79°54'52" E
L43	S 04°39'26" E
L44	S 75°08'23" W



STEPHEN A. BENNETT
D.B. 438, P. 183
TAX #74-26

SURVEY FOR
E MOUNTAIN PROPERTIES
JACKSON RIVER MAGISTERIAL DISTRICT
ALLEGHANY COUNTY VIRGINIA

260.06 ACRES
REMAINING PROPERTY -
MIDDLE MOUNTAIN, LLC
D.B. 395, P. 450
TAX #59-29



Vess Surveying